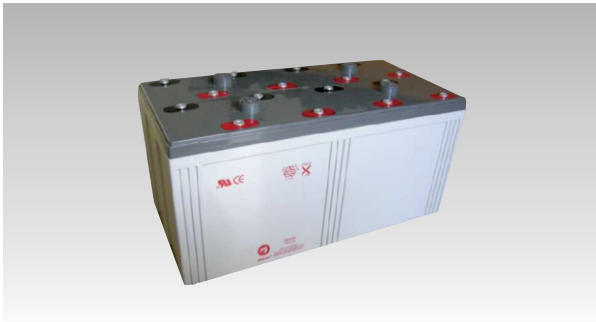
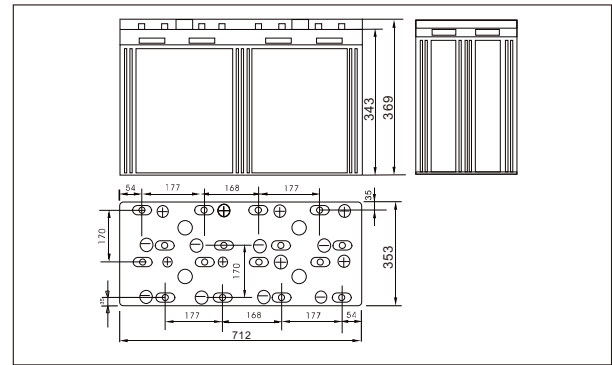




SW230000(2V3000AH)



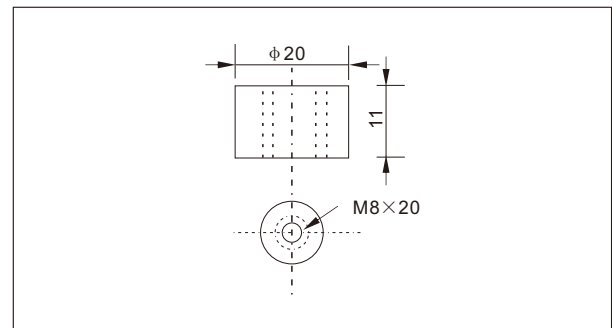
Outer dimensions (mm)



Specifications

Nominal Voltage		2 V
Rated capacity (10 hour rate)		3000 Ah
Dimensions	Total Height	369 mm (14.5 inches)
	Height	343mm (13.5 inches)
	Length	712 mm (28.0 inches)
	Width	353 mm (13.9 inches)
Weight Approx		181.0 Kg (399.1 lbs)

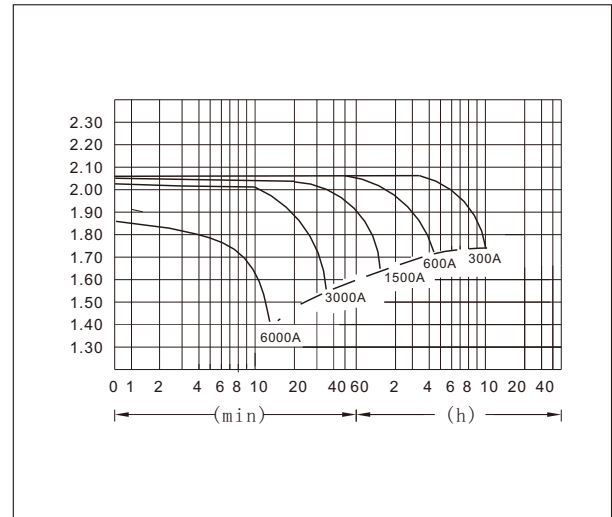
Terminal Type (mm)



Characteristics

Capacity 25°C(77°F)	10 hour rate(300 A)	3000 AH
	5 hour rate(480A)	2400 AH
	1 hour rate(1800 A)	1800 AH
	1.5 hour discharge to 1.75 V	1200 A
Internal Resistance	Full charged Battery at 25°C(77°F)	0.5 mΩ
Capacity affected by Temperature (10hour rate)	40°C(104°F)	102%
	25°C(77°F)	100%
	0°C(32°F)	85%
	-15°C(5°F)	65%
Self-Discharge at 25°C(77°F)	Capacity after 3 month storage	91%
	Capacity after 6 month storage	82%
	Capacity after 12 month storage	64%
Terminal		T20
Charge (constant Voltage)	Cycle	Initial Charging Current less than 750 A Voltage 2.35-2.40V
	Float	Voltage 2.25-2.30V

Discharge Curves 25°C(77°F)



Constant Current(Amp) and Constant Power(Watt) Discharge Table at 25°C(77°F)

Time		10min	30min	1h	2h	3h	4h	5h	8h	10h	20h
1.60V	A	5970.0	3420.0	1800.0	1050.0	774.0	600.0	505.25	347.5	330.0	171.0
	W	11730	6120	3480	2040	1500	1170.0	960.0	660.0	615.0	326.7
1.70V	A	5670.0	3330.0	1692.0	1002.0	750.0	585.0	495.2	341.3	310.5	168.0
	W	11280	6060	3270	1920	1440	1140.0	930.0	660.0	585.0	321.0
1.75V	A	5370.0	3060.0	1650.0	978.0	732.0	576.0	490.8	337.5	306.0	165.9
	W	10920	5700	3150	1890	1410	1110.0	918.0	651.0	579.0	315.0
1.80V	A	5070.0	2820.0	1590.0	954.0	714.0	567.0	462.0	328.7	300.0	163.8
	W	10500	5490	3030	1860	1380	1086.0	900.0	630.0	576.0	312.0
1.85V	A	4770.0	2520.0	1500.0	930.0	690.0	550.0	453.0	320.0	292.5	162.0
	W	9900	5040	2940	1830	1380	1065.0	894.0	603.0	570.0	307.5