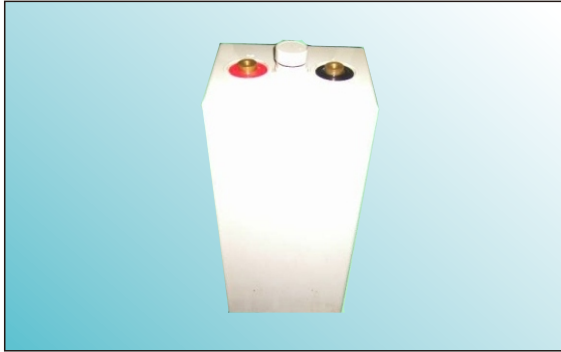




3OPzV150(2V150AH)



● **Features**

- Excellent high temperature performance;
- Excellent cycling performance;
- High strength ABS material;
- Plates: large capacity and thick plate structure design;
- Separator : glass fiber with high adsorption and high stability;

● **Applications**

- High temperature environment(35-70°C) ;
- Telecom&UPS;
- Solar and energy systems.

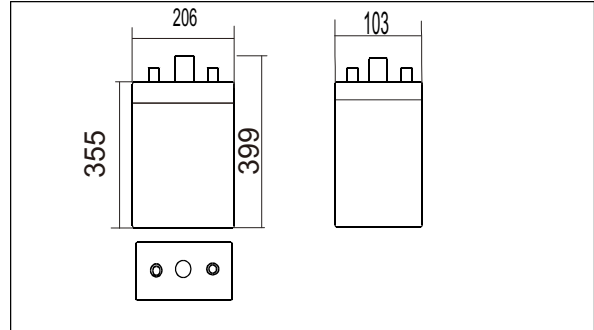
● **International standards**

- GB/T 22473 - 2008;
- JIS C8704-1 : 2006 ;
- IEC 60896-21/22 : 2004 ;
- Passed ISO9001, ISO14001,
- OHSAS18001, UL, CE, CGC.

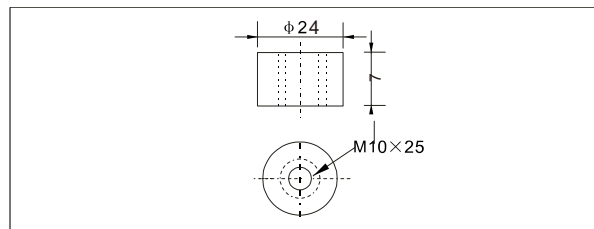
● **Specifications**

| | | |
|------------------------------|--------------|--------------------|
| Nominal Voltage | | 2V |
| Rated capacity(10 hour rate) | | 200Ah |
| Dimensions | Total Height | 399mm(15.7inches) |
| | Height | 355mm(14.0inches) |
| | Length | 103mm(4.1 inches) |
| | Width | 206mm(8.11 inches) |
| Weight approx | | 16.0 kg (35.2 lbs) |

● **Outer dimensions (mm)**



● **Terminal Type (mm)**



● **Characteristics**

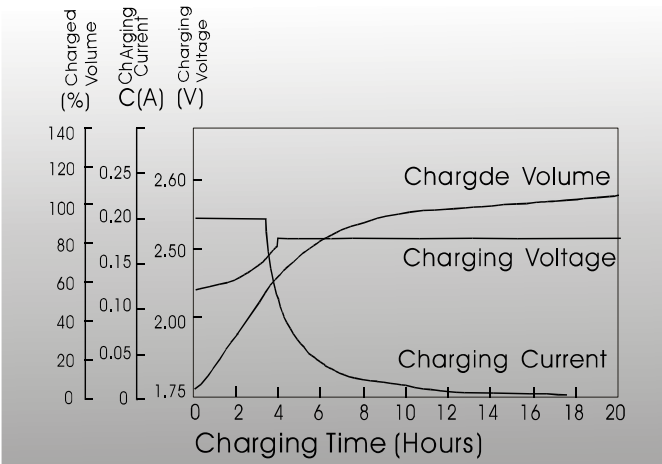
| | | |
|--|---|----------------------------|
| Capacity 25°C(77°F) | 10 hour rate(15.0 A) 5 hour rate(27.3A) 1 hour rate(78.8A) | 150AH 136.5AH 78.8AH |
| Internal Resistance | Full charged Battery at 25°C(77°F) | 1.5 mΩ |
| Capacity affected by Temperature (10hour rate) | 40°C(104°F) 25°C(77°F) 0°C(32°F) -15°C(5°F) | 102% 100% 85% 65% |
| Self-Discharge at 25°C(77°F) | Capacity after 3 month storage Capacity after 6 month storage Capacity after 12 month storage | 91% 82% 64% |
| Terminal quantity | 2 | |
| Charge (constant Voltage) | Initial Charging Current less than 37.5A Voltage 2.25-2.40V | |
| Design Life | 20 Year | |

Constant Current(Amp) and Constant Power(Watt) Discharge Table at 25°C (72°F)

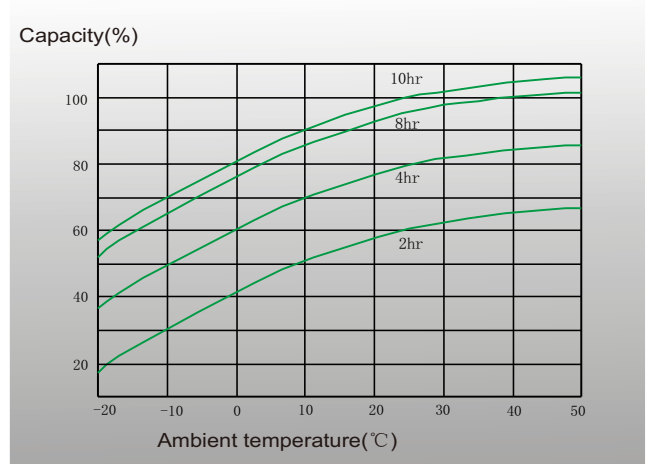
| Time | | 30min | 1hr | 2hr | 3hr | 5hr | 6hr | 8hr | 10hr | 20hr | 24hr | 48hr | 100hr |
|-------|---|-------|------|------|------|------|------|------|------|------|------|------|-------|
| 1.65V | A | 130.5 | 86.3 | 56.5 | 44.3 | 30.5 | 24.7 | 20.0 | 17.5 | 9.0 | 7.5 | 4.0 | 2.0 |
| | W | 274 | 176 | 126 | 89 | 57 | 55 | 45 | 34 | 17 | 15 | 10 | 5 |
| 1.70V | A | 126.8 | 82.5 | 53.3 | 41.7 | 28.8 | 23.3 | 19.2 | 16.5 | 8.8 | 7.5 | 4.0 | 2.0 |
| | W | 257 | 171 | 124 | 86 | 56 | 53 | 44 | 33 | 17 | 15 | 10 | 5 |
| 1.75V | A | 120.0 | 78.8 | 50.3 | 39.8 | 27.3 | 22.2 | 18.3 | 15.8 | 8.6 | 7.4 | 3.9 | 2.0 |
| | W | 235 | 167 | 121 | 83 | 56 | 51 | 42 | 32 | 17 | 15 | 10 | 5 |
| 1.80V | A | 115.5 | 75.0 | 47.5 | 37.5 | 25.5 | 21.2 | 17.7 | 15.0 | 8.1 | 7.4 | 3.9 | 1.9 |
| | W | 209 | 156 | 118 | 80 | 54 | 50 | 41 | 31 | 17 | 15 | 10 | 5 |
| 1.85V | A | 108.8 | 71.3 | 45.3 | 35.3 | 24.5 | 20.2 | 16.7 | 14.2 | 7.7 | 7.1 | 3.9 | 1.9 |
| | W | 182 | 152 | 112 | 75 | 52 | 47 | 39 | 29 | 16 | 14 | 10 | 5 |



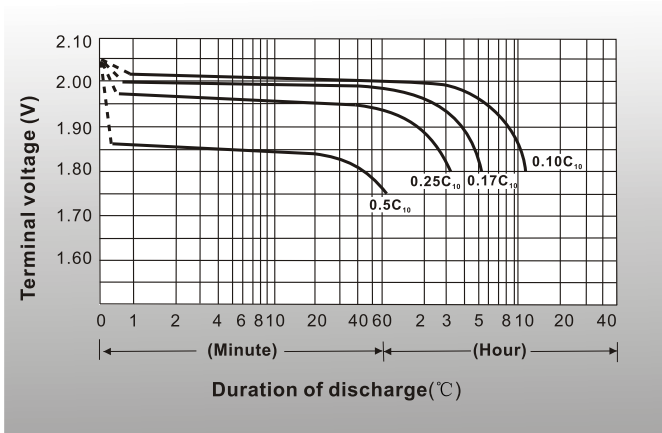
● Charging characteristics(25°C)



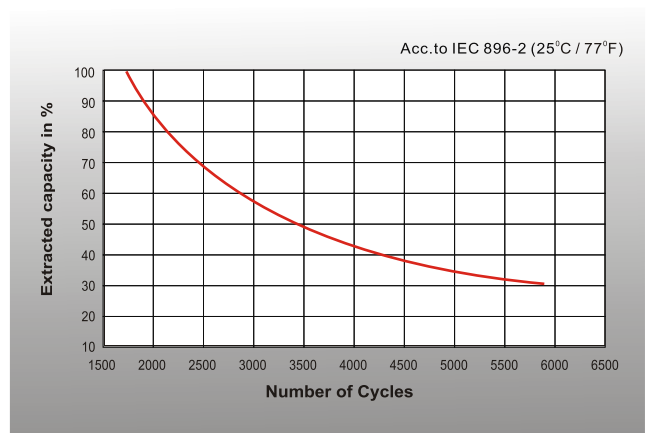
● Curves of discharge capacity and ambient temperature



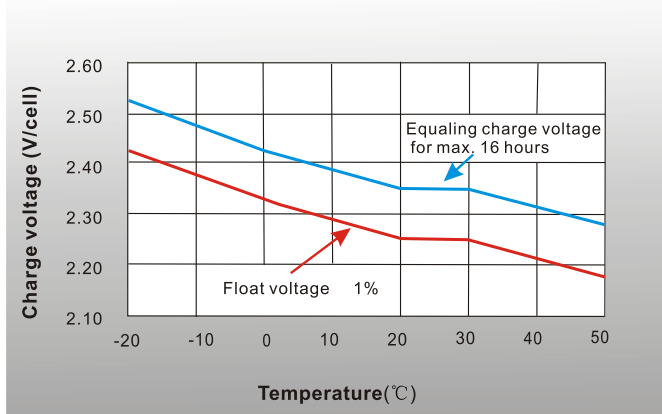
● Discharge characteristics 77° F(25°C)



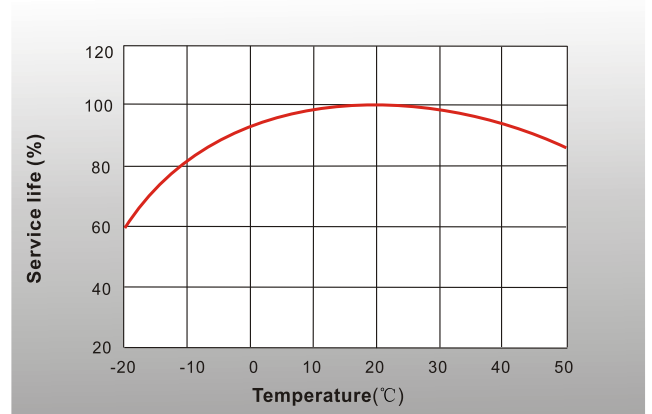
● Cycle life in relation to depth of discharge



● Charge voltage vs Ambient temperature curve



● Service life vs Ambient temperature



Shenzhen Sunnyway Battery Tech.Co.,Ltd.

Head Office: RM.A1302,NO.1 Building Tian'an Cyber Park, Longgang, Shenzhen, China
 Production Base: Nanyi Road,Dongying Economic Development Zone, Shandong, China.
 Tel:+86-755-84630145 Fax:+86-755-84630114
 Email:jerry@sunnyway-battery.com

