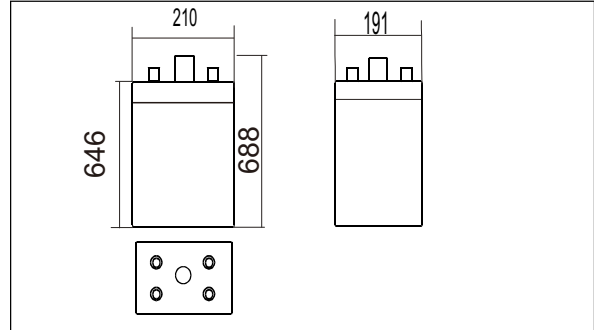




8OPzV800(2V800AH)



● Outer dimensions (mm)



● Features

- Excellent high temperature performance;
- Excellent cycling performance;
- High strength ABS material;
- Patas:large capacity and thick plate structure design;
- Separator : glass fiber with high adsorption and high stability;

● Applications

- High temperature environment(35-70°C) ;
- Telecom&UPS;
- Solar and energy systems.

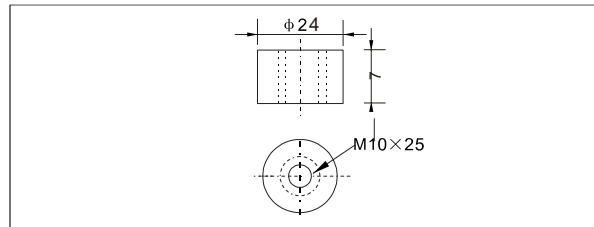
● International standards

- GB/T 22473 - 2008;
- JIS C8704-1 : 2006 ;
- IEC 60896-21/22: 2004 ;
- Passed ISO9001、 ISO14001、
- OHSA18001、 UL、 CE、 CGC.

● Specifications

NominalVoltage		2V
Ratedcapacity(10 hourrate)		800Ah
Dimensions	TotalHeight	688mm(27.1inches)
	Height	646mm(25.4inches)
	Length	191mm(7.52 inches)
	Width	210mm(8.27 inches)
Weight approx		65 kg (143lbs)

● Terminal Type (mm)



● Characteristics

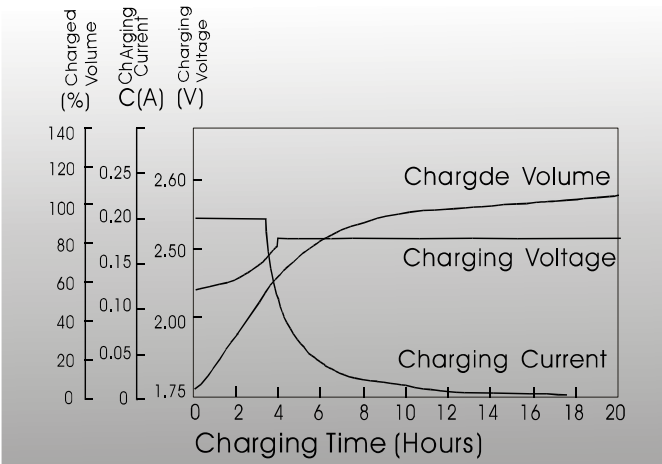
Capacity 25°C(77°F)	10 hour rate(80.0 A) 5 hour rate(145A) 1 hour rate(420A)	800AH 725AH 420AH
Internal Resistance	Full charged Battery at 25°C(77°F)	0.65 mΩ
Capacity affected by Temperature (10hour rate)	40°C(104°F) 25°C(77°F) 0°C(32°F) -15°C(5°F)	102% 100% 85% 65%
Self-Discharge at 25°C(77°F)	Capacity after 3 month storage Capacity after 6 month storage Capacity after12 month storage	91% 82% 64%
Terminal quantity	4	
Charge (constant Voltage)	Initial Charging Current less than 160 A Voltage 2.25-2.40V	
Design Life	20 Year	

Constant Current(Amp) and Constant Power(Watt) Discharge Table at 25°C (72°F)

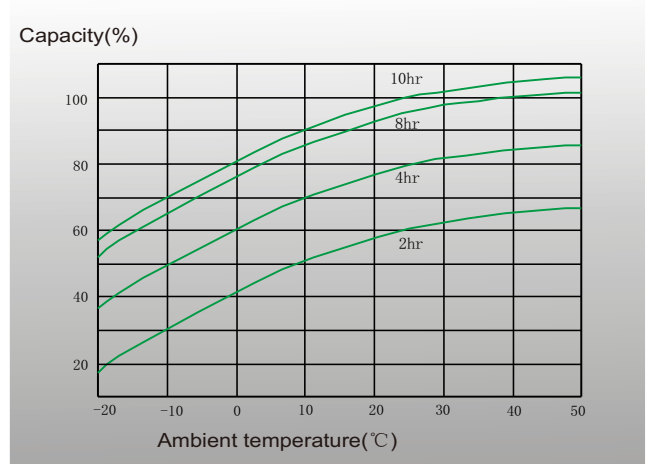
Time		30min	1hr	2hr	3hr	5hr	6hr	8hr	10hr	20hr	24hr	48hr	100hr
1.65V	A	696.0	460.0	301.3	236.0	162.7	131.6	106.7	93.3	48.1	39.9	21.3	10.5
	W	1460	940	673	472	305	292	241	180	91	82	54	28
1.70V	A	676.0	440.0	284.0	222.7	153.3	124.4	102.3	88.0	47.1	39.7	21.2	10.5
	W	1372	912	660	456	300	283	232	175	90	81	54	28
1.75V	A	640.0	420.0	268.0	212.0	145.3	118.3	97.7	84.0	45.6	39.6	20.9	10.4
	W	1255	888	643	441	296	275	224	168	89	80	54	28
1.80V	A	616.0	400.0	253.3	200.0	136.0	112.9	94.3	80.0	43.2	39.5	20.8	10.3
	W	1116	832	628	424	288	264	216	164	88	79	54	28
1.85V	A	580.0	380.0	241.3	188.0	130.7	107.6	88.8	75.6	40.8	37.6	20.7	10.3
	W	968	812	596	403	276	252	207	156	83	76	53	27



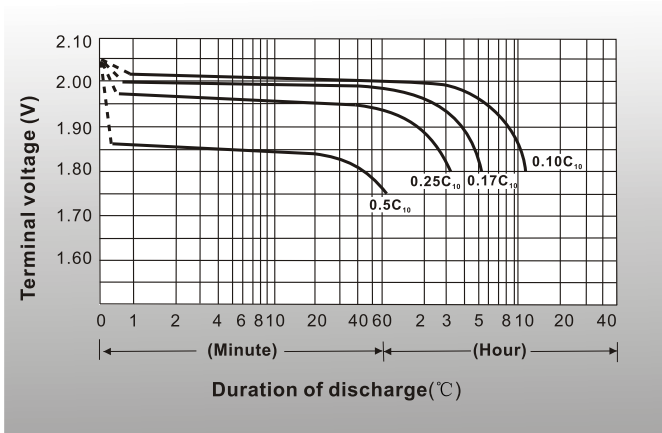
● Charging characteristics(25°C)



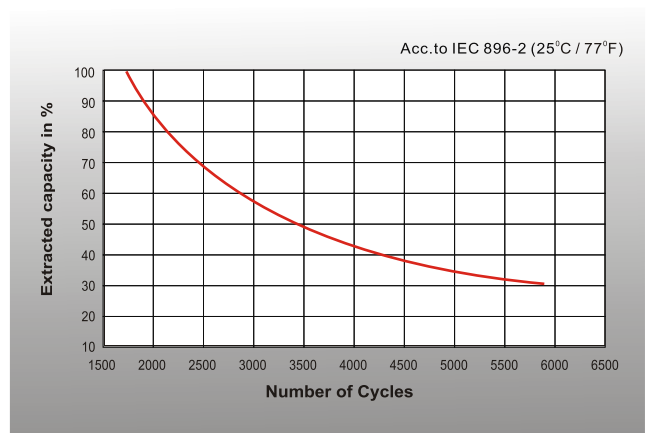
● Curves of discharge capacity and ambient temperature



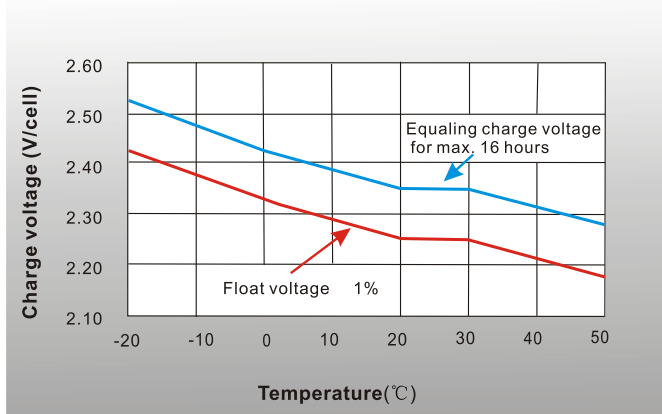
● Discharge characteristics 77° F(25°C)



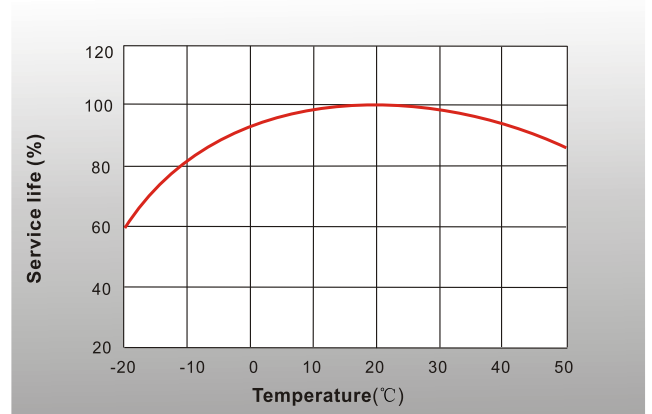
● Cycle life in relation to depth of discharge



● Charge voltage vs Ambient temperature curve



● Service life vs Ambient temperature



Shenzhen Sunnyway Battery Tech.Co.,Ltd.

Head Office: RM.A1302,NO.1 Building Tian'an Cyber Park, Longgang, Shenzhen, China
 Production Base: Nanyi Road,Dongying Economic Development Zone, Shandong, China.
 Tel:+86-755-84630145 Fax:+86-755-84630114
 Email:jerry@sunnyway-battery.com

