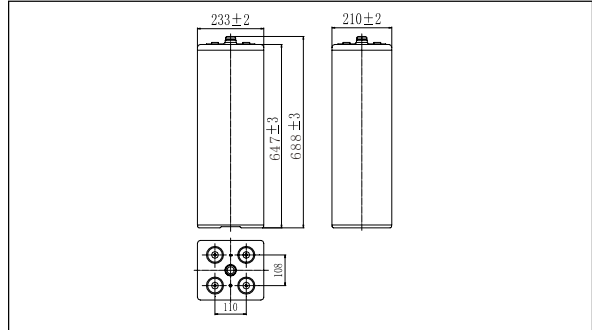




100PzV1000(2V1000AH)



Outer dimensions (mm)



Features

- Excellent high temperature performance;
- Excellent cycling performance;
- High strength ABS material;
- Patents: large capacity and thick plate structure design;
- Separator: glass fiber with high adsorption and high stability;

Applications

- High temperature environment (35-70°C) ;
- Telecom & UPS;
- Solar and energy systems.

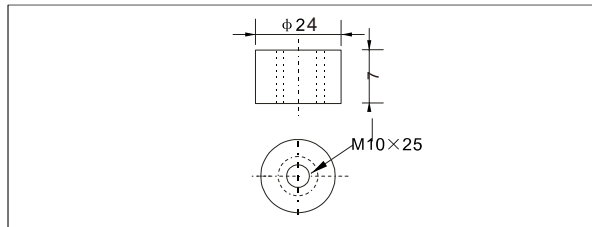
International standards

- GB/T 22473 - 2008;
- JIS C8704-1 : 2006 ;
- IEC 60896-21/22: 2004 ;
- Passed ISO9001, ISO14001,
- OHSAS18001, UL, CE, CGC.

Specifications

Nominal Voltage		2V
Rated capacity (10 hour rate)		1000Ah
Dimensions	Total Height	688mm (27.1 inches)
	Height	647mm (25.5 inches)
	Length	233mm (9.17 inches)
	Width	210mm (8.27 inches)
Weight approx		79 kg (173.8 lbs)

Terminal Type (mm)



Characteristics

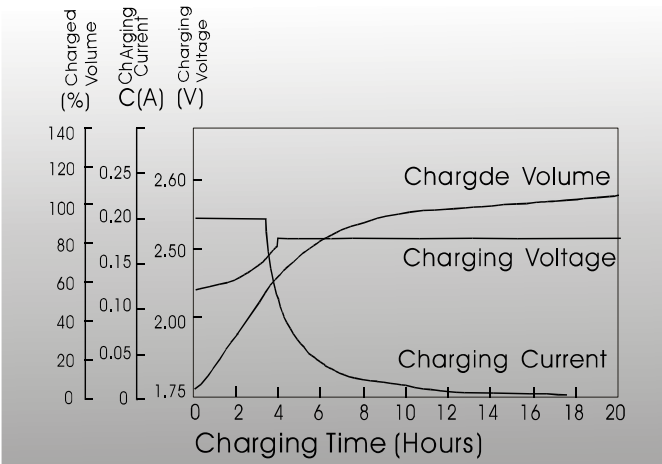
Capacity 25°C (77°F)	10 hour rate (100 A) 5 hour rate (181.7A) 1 hour rate (525A)	1000AH 908.5AH 525AH
Internal Resistance	Full charged Battery at 25°C (77°F)	0.48mΩ
Capacity affected by Temperature (10hour rate)	40°C (104°F) 25°C (77°F) 0°C (32°F) -15°C (5°F)	102% 100% 85% 65%
Self-Discharge at 25°C (77°F)	Capacity after 3 month storage Capacity after 6 month storage Capacity after 12 month storage	91% 82% 64%
Terminal quantity	4	
Charge (constant Voltage)	Initial Charging Current less than 250 A Voltage 2.25-2.40V	
Design Life	20 Year	

Constant Current(Amp) and Constant Power(Watt) Discharge Table at 25°C (72°F)

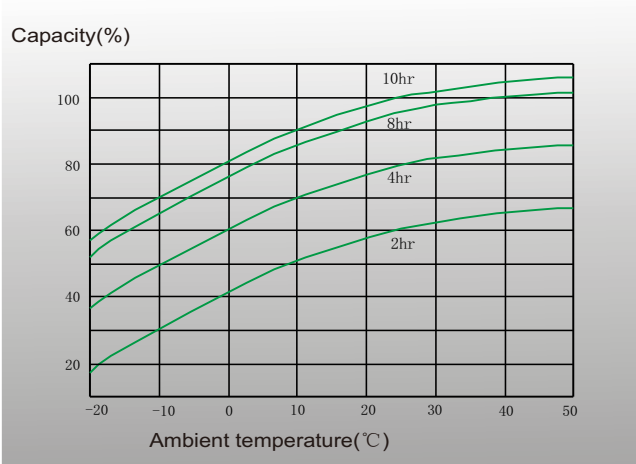
Time		30min	1hr	2hr	3hr	5hr	6hr	8hr	10hr	20hr	24hr	48hr	100hr
1.65V	A	870.0	575.0	376.7	295.0	203.3	164.5	133.3	116.7	60.2	49.8	26.7	13.1
	W	1825	1175	842	590	382	365	302	225	113	102	68	35
1.70V	A	845.0	550.0	355.0	278.3	191.7	155.5	127.8	110.0	58.8	49.7	26.5	13.1
	W	1715	1140	825	570	375	353	290	218	112	101	67	35
1.75V	A	800.0	525.0	335.0	265.0	181.7	147.8	122.2	105.0	57.0	49.5	26.2	13.0
	W	1568	1110	803	552	370	343	280	210	111	100	67	35
1.80V	A	770.0	500.0	316.7	250.0	170.0	141.2	117.8	100.0	54.0	49.3	26.0	12.9
	W	1395	1040	785	530	360	330	270	205	110	99	67	35
1.85V	A	725.0	475.0	301.7	235.0	163.3	134.5	111.0	94.5	51.0	47.0	25.8	12.9
	W	1210	1015	745	503	345	315	258	195	104	95	67	34



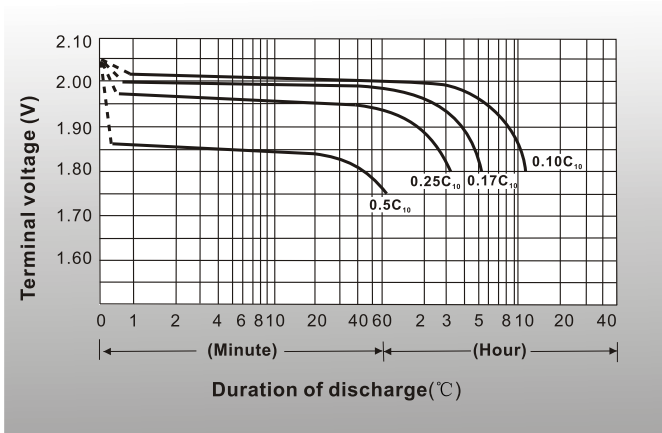
● Charging characteristics(25°C)



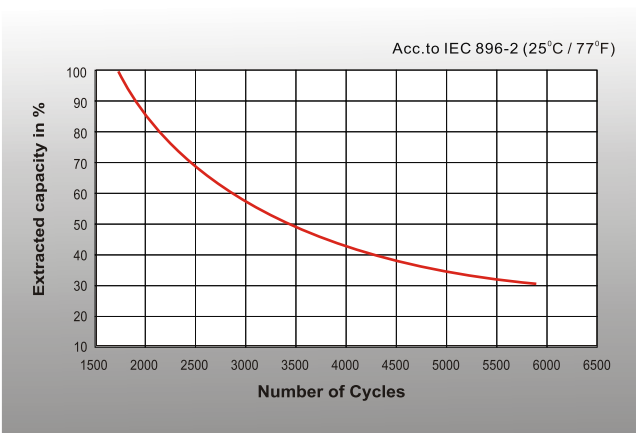
● Curves of discharge capacity and ambient temperature



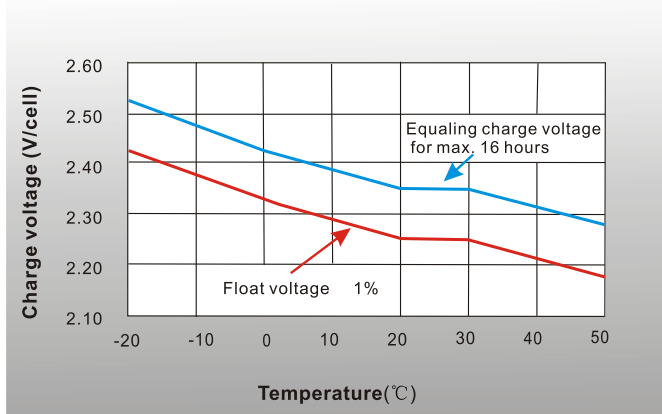
● Discharge characteristics 77° F(25°C)



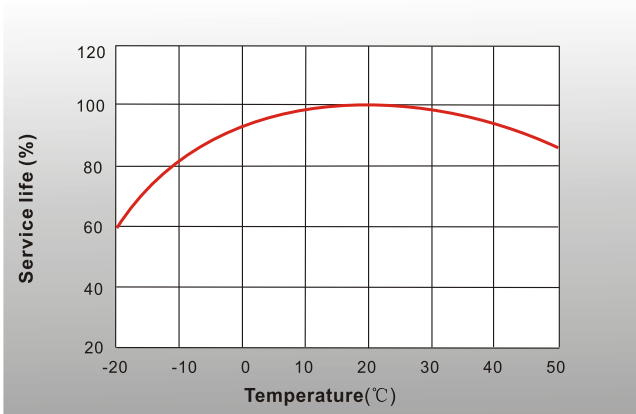
● Cycle life in relation to depth of discharge



● Charge voltage vs Ambient temperature curve



● Service life vs Ambient temperature



Shenzhen Sunnyway Battery Tech.Co.,Ltd.

Head Office: RM.A1302,NO.1 Building Tian'an Cyber Park, Longgang, Shenzhen, China
 Production Base: Nanyi Road,Dongying Economic Development Zone, Shandong, China.
 Tel:+86-755-84630145 Fax:+86-755-84630114
 Email:jerry@sunnyway-battery.com

